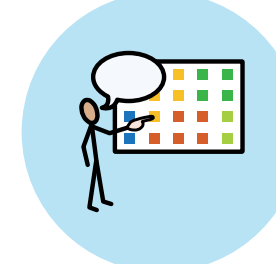


# Communication Board (Hospital)

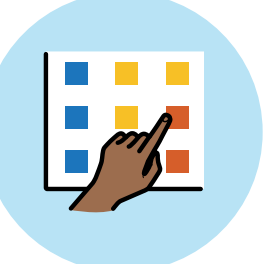
hospital	home	I / me	who	what	why	where	when	now	again	good	hurt	happy	better	medicine	0	1	2	3	4	5
inside	outside	you	want	come	see	talk	feel	in	on	bad	sick	sad	allergy	bleeding	£	6	7	8	9	10
problem	toilet	doctor	stop	go	put	wait	visit	off	up	more	hot	tired	drink	food	a	b	c	d	help me spell it	
thank you	sorry	nurse	like	get	help	sit	lie down	not	down	different	cold	scared	appointment	something else	e	f	g	h	it starts with	
															i	j	k	l	m	n
															o	p	q	r	s	t
															u	v	w	x	y	z



Boards like this one help people with communication difficulties to interact, participate and be included.



Everyone can use this board. To talk to someone with communication difficulties using this board, just point to the symbols as you talk.



Someone who uses symbols to communicate might point to a symbol without saying words, or you can point to each symbol in turn, until the person indicates yes or no.



This board is based on Super Core, a symbol vocabulary included in Grid AAC software. Find out more at [thinksmartbox.com](http://thinksmartbox.com)



Widgit Symbols © Widgit Software 2002-2025 [widgit.com](http://widgit.com)

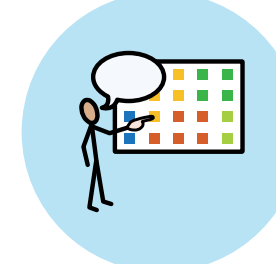


# Communication Board (Library)

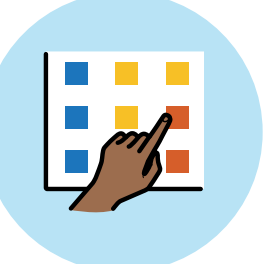
library	home	I / me	who?	what?	why?	where?	when?	now	again	good	easy!	happy	book	audiobook	0	1	2	3	4	5
															£	6	7	8	9	10
inside	outside	you	want	come	see	listen	read	in	on	bad	difficult?	sad	information	picture	a	b	c	d	help me spell it	
													i		e	f	g	h	it starts with	
problem	toilet	librarian	stop	go	put	find	borrow	off	up	more	boring	hot	computer	print	i	j	k	l	m	n
															o	p	q	r	s	t
thank you	sorry	friend	like	get	help	finish	can	not	down	different	funny	cold	group	something else	u	v	w	x	y	z



Boards like this one help people with communication difficulties to interact, participate and be included.



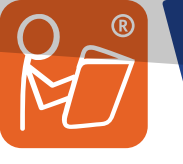
Everyone can use this board. To talk to someone with communication difficulties using this board, just point to the symbols as you talk.



Someone who uses symbols to communicate might point to a symbol without saying words, or you can point to each symbol in turn, until the person indicates yes or no.



This board is based on Super Core, a symbol vocabulary included in Grid AAC software. Find out more at [thinksmartbox.com](http://thinksmartbox.com)



Widgit Symbols © Widgit Software 2002-2025 [widgit.com](http://widgit.com)



# Communication Board (Park)

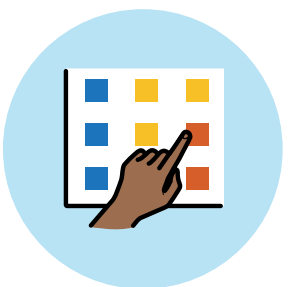
park	home	I / me	who?	what?	why?	where?	when?	now	again	good	fast	happy	game	toy	0	1	2	3	4	5
playground	school	you	want	come	see	climb	run	in	on	bad	slow	sad	slide	swing	£	6	7	8	9	10
problem	toilet	grown up	stop	go	put	push	hide	off	up	more	hot	tired	see saw	climbing frame	a	b	c	d	help me spell it	
help me please	play with me	friend	like	get	help	turn	can	not	down	different	cold	hurt	mud	something else	e	f	g	h	it starts with	
															i	j	k	l	m	n
															o	p	q	r	s	t
															u	v	w	x	y	z



Boards like this one help people with communication difficulties to interact, participate and be included.



Everyone can use this board. To talk to someone with communication difficulties using this board, just point to the symbols as you talk.



Someone who uses symbols to communicate might point to a symbol without saying words, or you can point to each symbol in turn, until the person indicates yes or no.



This board is based on Super Core, a symbol vocabulary included in Grid AAC software.  
Find out more at [thinksmartbox.com](http://thinksmartbox.com)



Widgit Symbols © Widgit Software 2002-2025

[widgit.com](http://widgit.com)



# Communication Board (School)

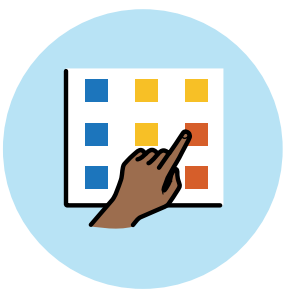
school	home	I / me	who?	what?	why?	where?	when?	now	again	good	fast	happy	game	toy	0	1	2	3	4	5
inside	outside	you	want	come	see	climb	run	in	on	bad	slow	sad	ball	bike	£	6	7	8	9	10
problem	toilet	grown up	stop	go	put	push	hide	off	up	more	hot	tired	chase	climbing frame	a	b	c	d	help me spell it	
help me please	play with me	friend	like	get	help	turn	can	not	down	different	cold	hurt	coat	something else	e	f	g	h	it starts with	
															i	j	k	l	m	n
															o	p	q	r	s	t
															u	v	w	x	y	z



Boards like this one help people with communication difficulties to interact, participate and be included.



Everyone can use this board. To talk to someone with communication difficulties using this board, just point to the symbols as you talk.



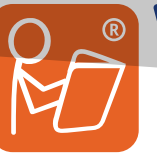
Someone who uses symbols to communicate might point to a symbol without saying words, or you can point to each symbol in turn, until the person indicates yes or no.



Smartbox



This board is based on Super Core, a symbol vocabulary included in Grid AAC software. Find out more at [thinksmartbox.com](http://thinksmartbox.com)



Widgit



Widgit Symbols © Widgit Software 2002-2025 [widgit.com](http://widgit.com)

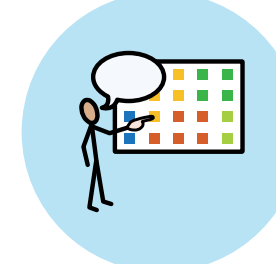


# Communication Board (Sensory room)

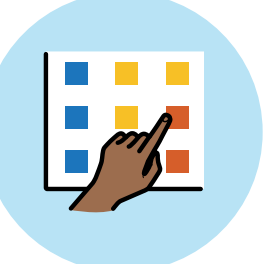
sensory room	home	I / me	who	what	why	where	when	now	again	good	fast	happy	game	toy	0	1	2	3	4	5
inside	outside	you	want	come	see	listen	feel	in	on	bad	slow	sad	noise	music	£	6	7	8	9	10
problem	toilet	grown up	stop	go	put	push	jump	off	up	more	hot	tired	lights	blanket	a	b	c	d	help me spell it	
help me please	play with me	friend	like	get	help	turn	can	not	down	different	cold	hurt	colour	something else	e	f	g	h	it starts with	
															i	j	k	l	m	n
															o	p	q	r	s	t
															u	v	w	x	y	z



Boards like this one help people with communication difficulties to interact, participate and be included.



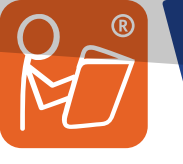
Everyone can use this board. To talk to someone with communication difficulties using this board, just point to the symbols as you talk.



Someone who uses symbols to communicate might point to a symbol without saying words, or you can point to each symbol in turn, until the person indicates yes or no.



This board is based on Super Core, a symbol vocabulary included in Grid AAC software. Find out more at [thinksmartbox.com](http://thinksmartbox.com)



Widgit Symbols © Widgit Software 2002-2025 [widgit.com](http://widgit.com)